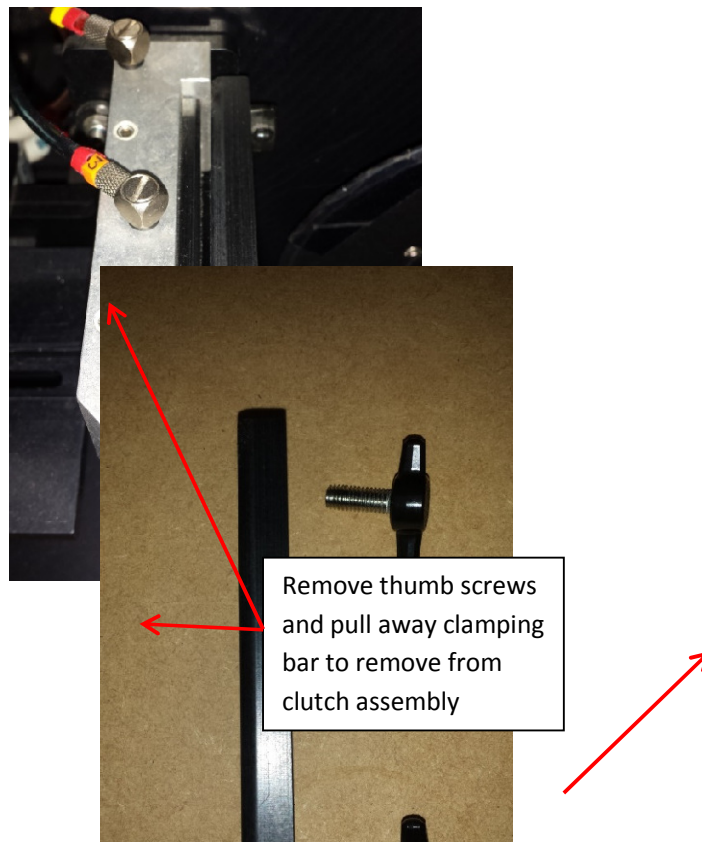


KAPS 500

Foil Clutch service procedure

The foil clutch is located in front of the input foil reel, the action of the foil clutch is to provide resistance to the foil as it is fed through the mechanism and to prevent the input foil reel from uncontrolled release of foil.

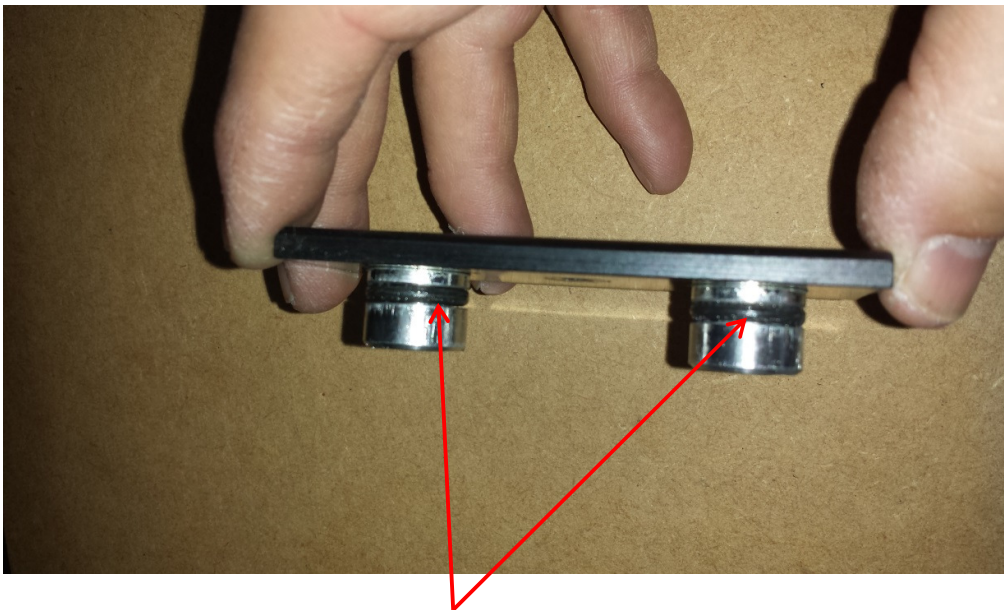
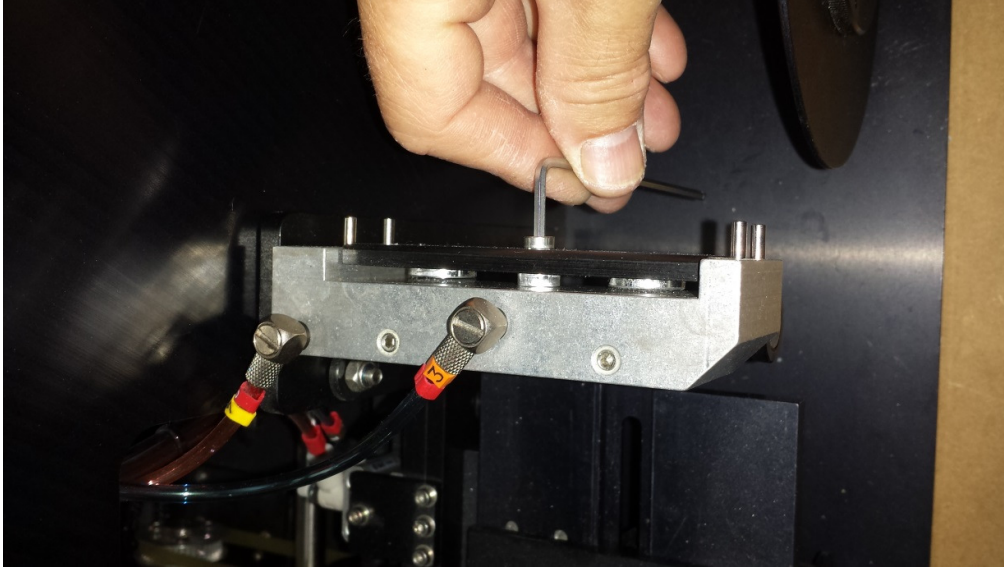
1. The foil clutch mechanism is activated by pneumatic pressure acting on three pistons which operate the foil clamp.
2. The three pistons can be removed and sealing O rings inspected or replaced if necessary.
3. To Inspect or remove foil clutch mechanism follow the procedure as shown below,



Ensure when re-assembling the clamping bar the radius edge is adjacent to the foil face.

KAPS 500
Foil Clutch service procedure

4. To remove piston plate with actuating pistons only the **center** screw is required to be released.

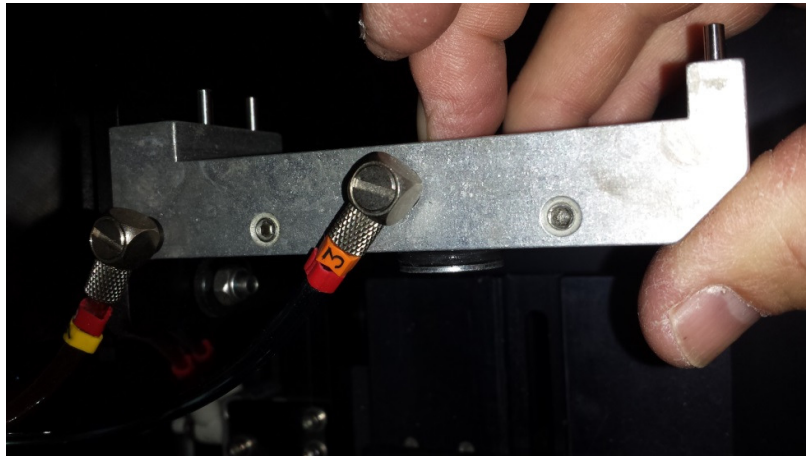


Sealing O ring Part number.3032-10001.

Pull away piston plate to expose the two outer pistons and two sealing O rings.

KAPS 500
Foil Clutch service procedure

- The centre piston can now be released by pushing out through the main foil clutch body, this will expose the two sealing O rings on this piston,



Sealing O ring Part number. 3032-10003

Sealing O ring Part number. 3032-10002

- When re-assembling the foil clutch mechanism it is recommended to lubricate the piston sealing O rings with a suitable grease/ lubricant, silicon grease or similar.
- Ensure there are no sharp edged apparent when inserting pistons into clutch body to preserve the integrity of the sealing O rings.

Main Assembly Part Numbers.

Clutch main Body	1010-27705-182
Clamping Bar	1010-27705-200
Piston Plate	1010-27705-188
Centre Piston	1010-27705-201
Outer pistons	1010-27358-023
O ring	3032-10001 (x 2)
O ring	3032-10002

O ring

3032-10003