

## Scorpion Plate Gripper position Alignment

1. Disconnect all Power and Pneumatic services to Scorpion Plate stacker.
2. Remove gripper alignment cover (six fixings)
3. Using the 13mm socket and ratchet bar supplied, Loosen central nut.



4. The gripper assembly can be adjusted in the left & right position and the horizontal alignment can be set .

Shown Below for clarity, the Nut has been removed to visually note the adjustment slot for L & R position. The Horizontal Alignment can be rotated to ensure correct plate pick up from conveyor.

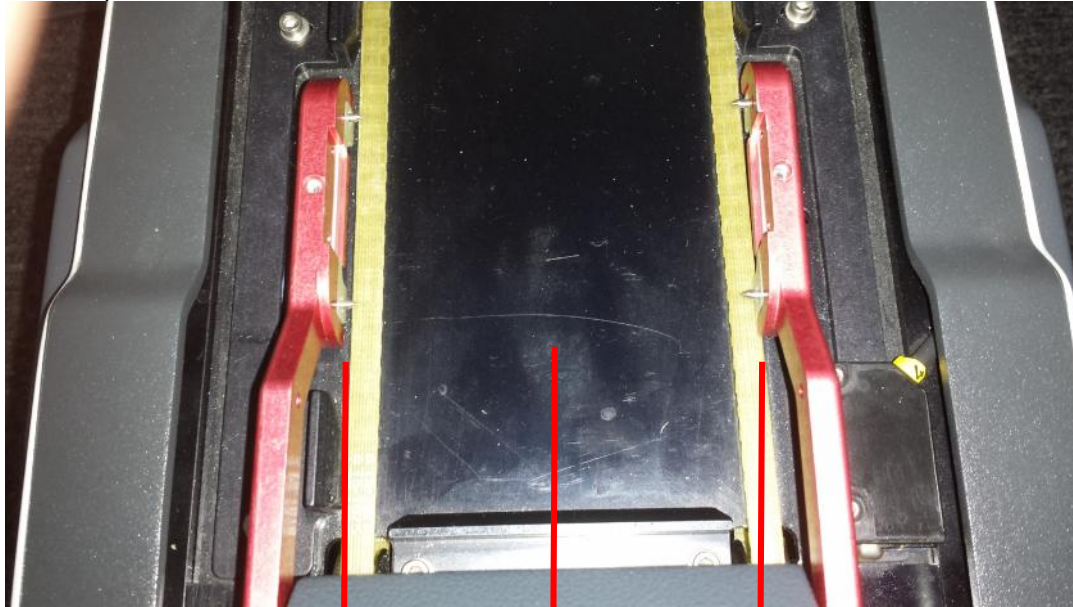


5. Shown Below is an exaggerated position to visually note the adjustment required for horizontal alignment.



**Scorpion**  
**Plate Gripper position Alignment**

6. Ensure Plate Gripper is horizontal and the grippers are located centrally to the conveyor plate transport system.  
As shown in the pictures below.



= =

Center line

